

# **BOTANY** Community Advocacy Plan

Botany: a community for sustainable living



*In partnership with*



Te Kaunihera o  
**MANUKAU**  
City Council

## VISION

*Botany will be a community where different cultures weave together to create a strong and unique identity. It will be a safe and attractive place where people enjoy good health and excellent educational facilities. Botany will also be an employment centre with efficient roads linking businesses throughout the Auckland region, which will contribute to a thriving regional economy, while preserving and sustaining environmental and heritage values.*

### Vision

<b>Contents</b>	<b>1</b>
<b>Advocacy plan</b>	<b>2</b>
<b>Botany community</b>	<b>3</b>
■ History, demographics and physical setting	3
■ Community values	4
■ Tomorrow's Botany	4
<b>Flat Bush community plan</b>	<b>5</b>
<b>Community board priorities</b>	<b>6</b>
■ Community safety	7
■ Sense of community and place	8
■ New settlers	9
■ Transport and roading	10
■ Arts and culture	11
■ Education	11
■ Health	12
■ Environment and heritage	12
■ Planning and design	13
■ Flat Bush development	14
■ Local participation	14
<b>Appendices</b>	
Appendix 1 Botany community map	17
Appendix 2 Botany community 2006 census profile	18
Appendix 3 Role of community boards	20
Appendix 4 Botany Community Board members	21
Appendix 5 Board member responsibilities	22
Appendix 6 Tomorrow's Botany	23
Appendix 7 Flat Bush community plan	24



## Advocacy plan

The Local Government Act 2002 states that the role of a community board is to represent, and act as an advocate for, the interests of its community (see appendix 3).

The purpose of this community advocacy plan is to support the role of the Botany Community Board to advocate effectively for the interests of its community.

This plan is the first to be prepared by the Botany Community Board and represents its plan of action of the current term. It is intended to be a living and evolving document. It is also intended to inform the public and the Manukau City Council about the aspirations and needs of the Botany community.

An annual status report on the plan and actions will be prepared by the chairperson of the board and presented annually to the rest of the board and the Manukau City Council.

For further information about this plan, please contact the Democratic Services Co-ordinator for Botany (Jenni Wild, phone 262 8900, extension 8189) or members of the Botany Community Board (refer to Appendix 4 for their contact details).



## Botany community

### History, demography and physical setting

The Botany area was originally occupied by Nga Iwi, Te Wai o Hua, and later Aki Tai and Ngati Kahu. In more recent times, Ngai Tai also settled in the area. European settlement began in the 1850s with the farming of oats, hay and wheat, but it was not until the late 1970s that residential housing spread into the area.

Up until 2004, Botany was part of the Howick, Clevedon and Otara wards and experienced rapid growth with its population more than trebling over the past decade. The Botany community now includes the rapidly developing East Tamaki and Highbrook industrial areas, the Burswood, Huntington Park, Golflands, Botany Downs and Dannemora neighbourhoods, and the Botany shopping centre. It also includes the current Flat Bush development area which will have its own town centre and an estimated 40,000 residents by 2020. (Refer to the Botany community map in Appendix 1).

The majority of Botany community residents are European (46 per cent) and Asian (42%), with the rest of the population consisting of Maori (5%), Pacific peoples (4%) and Middle Eastern, Latin American and African ethnic groups (3%). (See the Botany community 2006 census profile in Appendix 2).

People in Botany enjoy their high quality environment, with its exciting new growth, development and multi-cultural community. Botany's central location, close to all amenities, good schools, shopping, parks, reserves and the countryside makes it a great place for families to live.

## Botany community continued...

### Community values

We are a community that respects, preserves and honours our history, our land, and our diverse culture. We value the well-being of our community by supporting a safer, healthier and more supportive community and a cleaner environment. We are friendly and hard working people with a strong community voice who are passionate about developing a sustainable community.

In working towards the vision for Botany (refer to the front of the document), we will follow these principles and values:

- Respect for people and their freedom
- Personal productivity supported by transport choice
- Pride in the community and concern for the well-being of others
- Desire to invest in future generations
- Respect for all those who invest economically and socially in the community
- Promotion of self-determination and self-reliance
- Pride in the richness of communities that weave together their many cultures and abilities to form the Botany community
- Recognition and respect for life and spiritual needs
- Participation in the democratic processes of the community and in the management of its resources
- Inclusiveness.

### Tomorrow's Botany

During the review of Tomorrow's Manukau – Manukau Āpōpō (A Vision for Manukau into the Future 2006-16) throughout 2004 and 2005, the Botany community identified a number of areas as needing particular attention. See Appendix 6 for the Tomorrow's Botany excerpt from Tomorrow's Manukau.



## Flat Bush community plan

The Flat Bush community plan was adopted by the Manukau City Council in August 2006 and sets out the community's vision, objectives and priorities for Flat Bush. These are intended to provide the framework to develop, and the environment to nurture a strong community that meets the needs of its people.

The plan was developed through an intensive yet broad process of community engagement led by the Botany Community Board, consulting with and gathering information from a catchment area that extends well beyond the Flat Bush area alone.

The Flat Bush Community Plan is, therefore, a vital document and resource for the Botany Community Board in its role as an advocate for the interests of its community, and in setting its priorities in this Botany community advocacy plan.

The objectives and priorities of the plan are contained in Appendix 7.

### About Flat Bush

Flat Bush is made up of 17,000 hectares of land bound to the west by Te Irirangi Drive and to the south by Redoubt Road. In the east, it extends along the continuation of Redoubt Road across the top of the water catchment. Browns Lane is the northern boundary. It covers approximately half the area of the Botany community.



## Community board priorities

As a relatively new and rapidly growing area, the Botany community presents a diverse range of both opportunities and challenges for the council, the community board, residents, businesses, community organisations and service providers alike.

The board must focus its attention on specific areas it considers particularly important for the development of the Botany community - both now and into the future.

In addition to the collective local knowledge of community board members, a number of community-based documents contributed to the board's identification of priorities as outlined in this plan. These documents include:

- Tomorrow's Manukau – Manukau Āpōpō: A Vision for Manukau into the Future 2006-2016
- Tomorrow's Botany (refer to Appendix 6)
- Flat Bush community plan (refer to Appendix 7)
- Community research in Flat Bush (Hand Consulting Services, June 2008)
- Community research in Flat Bush – survey of residents (Gravitas Research and Strategy Ltd, June 2008).

For further information concerning any of these documents, please contact the Democratic Services Co-ordinator for Botany (Jenni Wild, phone 262 8900, extension 8189).

The top two priorities identified by the Botany Community Board in this plan are:

- Community safety
- Building a sense of community or place.

The board's general concerns and more specific intentions regarding these and other priorities will follow.



### Community safety

Recent events and surveys confirm that community safety and perceptions of safety are paramount concerns for residents in the Botany and Flat Bush communities. To address these concerns, the board will:

- Advocate for an increase in the number of sworn officers assigned across Manukau city, and for a police presence in the new Flat Bush town centre
- Advocate for increased council assistance, and support of community safety networks and local neighbourhood support groups
- Work with the council and the police to manage and monitor problem areas around the public consumption of alcohol to promote safety and perceptions of safety, and seek to impose further liquor bans where appropriate
- Advocate for increased community input in decision-making over the location and density of liquor outlets
- Encourage the council and mall owners to provide improved security measures within malls
- Seek increased council funding for graffiti removal and anti-graffiti measures, such as mobile closed circuit television, as the presence of graffiti increases the likelihood of other criminal behaviour and heightens concerns about safety within local communities
- Encourage the adoption and incorporation of Crime Prevention through Environmental Design (CPTED) principles within both town centres and neighbourhoods to reduce opportunities for crime
- Advocate for the council to provide increased street lighting to deter crime in older streets (for example, Glamworth Place, Dannemora).





## Community board priorities continued...

### Sense of community and place

The Botany community is a rapidly growing area with a significant proportion of new residents comprising young families and migrant groups. These new and culturally diverse groups, when combined with existing and more established residents, creates challenges for both the board and the council to ensure that all individuals and groups are melded into an identifiable, cohesive and integrated community with a strong sense of itself and its place in the wider city.

To foster and encourage a sense of local community within the existing Botany and new Flat Bush areas, the board will:

- Advocate for the council to take immediate steps to address the lack of community facilities within the wider Botany community and provide a non-denominational facility for community use as a matter of urgency. The board envisages that such a facility would provide both meeting rooms and a performance space. Other wards in Manukau generally have various community, sporting facilities or halls available to complement council’s community facilities, yet Botany is virtually devoid of any public or private community facilities
- Advocate for and assist the council in the branding of a Botany identity and the provision of welcome signage approaching Botany town centre, and the Flat Bush town centre once it is established
- Assist, encourage and support the development of new and existing community groups, activities and events supporting young families, cultural and ethnic groups, and the elderly. The board will also seek increased funding from the council to take account of the significant population increases in the area, much of which comprises young families and new settlers
- Advocate for additional council funding to support arts and cultural groups and events in the city – either directly by the council or through the community board discretionary funds
- Encourage and support the development of community groups and networks, and give priority to the development and support of community-based services such as Plunket, Citizens’ Advice Bureaux (CAB), new settlers’ programmes, youth programmes and events
- Support community groups and facilities in providing programmes and activities for older people
- Request the council to immediately establish a CAB in the Botany town centre, and investigate the establishment of a CAB in Flat Bush in future
- Advocate for and work with the council and Tomorrow’s Manukau Property Limited (TMPL) to ensure that a library, recreation centre and community meeting rooms are incorporated within the future Flat Bush town centre development
- Seek additional funds for development in, and facilities on, community parks, particularly playgrounds and gas barbeque and picnic areas on local reserves such as Logan Carr, Kilkenny and Cyril French reserves
- Advocate for the council to provide changing room and toilet facilities as part of the development of Greenmount Reserve.

The board also seeks to promote a ‘family-friendly’ environment in the town centres with a variety of affordable activities for children, young people and their families.

### New settlers

The Botany community has the most diverse number of ethnic groups within Manukau city. It also has a high proportion (42 per cent) of residents of Asian ethnicity, particularly from the Chinese and Indian communities, and many new settlers to New Zealand.

In addition to the more general priorities above that would assist the wider community, the board is also keen to support new residents and to assist them in becoming full and active participants of the local community. To achieve this, the board will:

- Advocate for and encourage the provision of English for Speakers of Other Languages programmes to support new settlers in Botany and Flat Bush
- Request that the council provides the required resources to deliver special new settlers’ programmes in the Botany area, such as KiwiLife and the Migrant Men’s group, in a non-denominational venue
- Request that the council provides information for current and prospective residents in a range of languages and local media (including on-line media) and facilitate key community and government agencies to establish a range of services and information needed by new settlers
- Continue to support and encourage the development of the Manukau Asian Forum and, given its wider relevance across Manukau city, encourage the council to play a more prominent role in the support and funding of the forum.





## Community board priorities continued...

### Transport and roading

In relation to public transport, the board will work with the council and the Auckland Regional Transport Authority (ARTA) to:

- Investigate park and ride facilities at both Botany and Flat Bush
- Identify new bus service requirements in the growing residential areas of Botany and Flat Bush
- Achieve transport links that give easy access to tertiary institutions, and health and medical services.

In relation to roading, the board will advocate to the council and ARTA to ensure the timely provision of adequate arterials to service the Botany and Flat Bush communities (such as the Auckland Manukau Eastern Transport Initiative and Mill Road).

The board will also:

- Seek the introduction of traffic flow measures such as light phasing and high occupancy vehicle lanes to ease congestion
- Advocate for the active monitoring of accident spots, particularly around schools. In particular, the board will seek the imposition of traffic safety measures on Gracechurch Drive east of Willowbank School
- Seek the introduction of speed restrictions where considered necessary. In particular, the board will advocate for the reduction of the speed limit on Chapel Road to 60 km per hour.
- Advocate for the council to ensure there is adequate traffic signage around schools
- Seek the provision of pedestrian crossings where necessary or desirable to ensure the safety of children and families (for example on Millhouse Road, opposite the Kilkenny Drive playground).

Other specific roading and safety improvements sought by the board include:

- The installation of red light cameras at the Ti Rakau Drive, Te Irirangi Drive and Botany Road intersection as this continues to be one of New Zealand's worst crash intersections
- Improvements at the Harris Road and Ti Rakau Drive intersection to overcome the current traffic bottleneck
- That the council urgently investigates the reconstruction of the Harris Road, Smales Road and Allens Road intersection to mitigate the traffic problems resulting from the development of the Highbrook Drive interchange, road and industrial area
- That the signalised pedestrian crossing by the Gracechurch shops on Chapel Road be moved to the intersection of Gracechurch Drive and Chapel Road as the current location of these traffic lights leads to confusion amongst road users
- That the Baverstock and Chapel Road intersection be investigated for the possible installation of traffic signals.

The board would also like the council to ensure the strict enforcement of parking regulations in relation to mobility parking spaces.

### Arts and Culture

In addition to general encouragement and support of various cultural groups to celebrate and share their festivals with the wider community, the board will specifically work with the council to investigate and develop a cultural festival as a signature event for the Botany community.

The development of the new Flat Bush town centre and Barry Curtis Park also provides exciting new opportunities for both the Botany and wider Manukau communities to support arts and the many cultures that make up the local community and wider city.

In this regard, the board will advocate for the creation of an arts and cultural precinct in the new Flat Bush town centre. It will create and support opportunities for arts activities in Barry Curtis Park and support the provision of facilities and open spaces for arts and cultural activities and events.



### Education

To support the educational aspirations of the high proportion of families in the Botany community, the board will work with the council to:

- Encourage community, public and private organisations to provide high quality early childhood care and education within the Botany community
- Facilitate and support community, public and private organisations to provide high quality after school care and holiday programmes
- Lobby the Ministry of Education to ensure that adequate land is obtained for the provision of schools and educational facilities to cope with the anticipated growth in the Botany and Flat Bush communities.

The board will work with the council and the Ministry of Education and local schools to develop and refine appropriate school zones with consistent catchments between existing primary and intermediate schools, and the cohesive planning of future primary, intermediate and secondary school zones.



## Community board priorities continued...

### Health

The board will advocate for the provision of accessible primary health care services including general practitioner services, dental services, laboratory, pharmacies and other ancillary support services which meet the needs of the community. Also, the board will advocate for transport links to hospitals and specialist health services.

The board will also:

- Advocate for the council to work with the Counties Manukau District Health Board to ensure that sufficient school dental facilities, fixed or mobile, are provided to students in the wider Botany community
- Advocate for the council to continue to work with TMPL in planning the future Flat Bush primary healthcare hub, and ensure that a dental facility able to cater for secondary students is located within that wider medical facility.

To promote healthy lifestyles, the board will work with the council to investigate the provision of a skate park facility in the Botany area, possibly at Logan Carr Reserve.

The board also supports the provision of a future skate park at Barry Curtis Park in Flat Bush and the retention of the planned aquatic facility at the park.

### Environment and heritage

To maintain and protect heritage assets with the Botany community, the board will work collaboratively with the council and local heritage groups and historians to protect heritage buildings and features in Botany.

The Botany community has benefitted from the development of a number of neighbourhood parks, reserves and playgrounds over the last few years, and the board wants to ensure these vital community assets are developed and maintained. In particular, the board will:

- Advocate for increased council maintenance around local waterways and bush lands to address littering and dumping, particularly in areas such as the stormwater pond at Cyril French Reserve opposite Newhaven and the Hub, and the stream behind Sancta Maria College
- Advocate for increased council monitoring to ensure compliance with planning requirements and district and regional environmental standards to minimise pollution in local waterways
- Advocate to the council for the development of a mosquito control plan for the waterways
- Advocate to the council to ensure that parks, open spaces and storm water areas are managed and maintained to promote safety for all users
- Work with the council to ensure that planting schemes minimise obstacles and hazards for pedestrians; particularly the elderly, the physically and visually disabled, and parents with young children in prams or pushchairs.

The board will also continue to lobby for the undergrounding of all existing and future high voltage transmission lines across the Botany community.

### Planning and design

Given the rate of new development in the Botany community, the board is concerned to ensure that a high standard of housing is maintained. It will encourage the adoption and incorporation of CPTED principles within existing and new town centres and neighbourhoods to reduce opportunities for crime and anti-social behaviour.

The board is also wants to ensure that the opportunity to ‘do things right first time’ is not lost in respect of access for the disabled members of the community. Improved access for disabled persons also improves access for all sections of the community, particularly the elderly and parents of young children.

In this regard, the board will advocate for the use of universal design principles and best practice on access for disabled people, especially in town centres and major leisure, cultural and community facilities. It will lobby to ensure public facilities are located on the ground floor, or are otherwise accessible without the use of a lift.

The board will also work with the council to ensure the provision of adequate, safe and secure car parking in local neighbourhoods, shopping centres and public transport facilities, including off-street parking in town centres.





## Community board priorities continued...

### Flat Bush development

In addition to other priorities for Flat Bush specifically mentioned above, the board will also advocate and work with the council to:

- Ensure the provision of quality community facilities within the Flat Bush development area
- Ensure cycle lanes are safe for all ages to use by placing them alongside footpaths, and inside the roadside parking as is done overseas
- Ensure that footpaths within the greenfingers network are sufficiently wide to provide for both pedestrian and cycle access
- Continue work with TMPL and Melview Developments to progress the development of the town centre proposals so work can commence at the earliest opportunity
- Ensure that adequate provision is made for the planning and development of the Flat Bush library and ensure that the initial funding removed in the 2008/09 Annual Plan is reinstated no later than the 2010 financial year
- Continue with the ongoing studies based on the feasibility study and design concepts for the Flat Bush Aquatic/Recreation and Sportsville facility with the possibility of it opening in 2014/15
- Provide meeting places for the community to enable the establishment and strengthening of community organisations within Flat Bush
- Progress the planning and development of Plan Change 20 to enable seamless development of the next stage of the area
- Work with the council and TMPL to ensure flexible transport solutions are built into the Flat Bush town centre master plan.

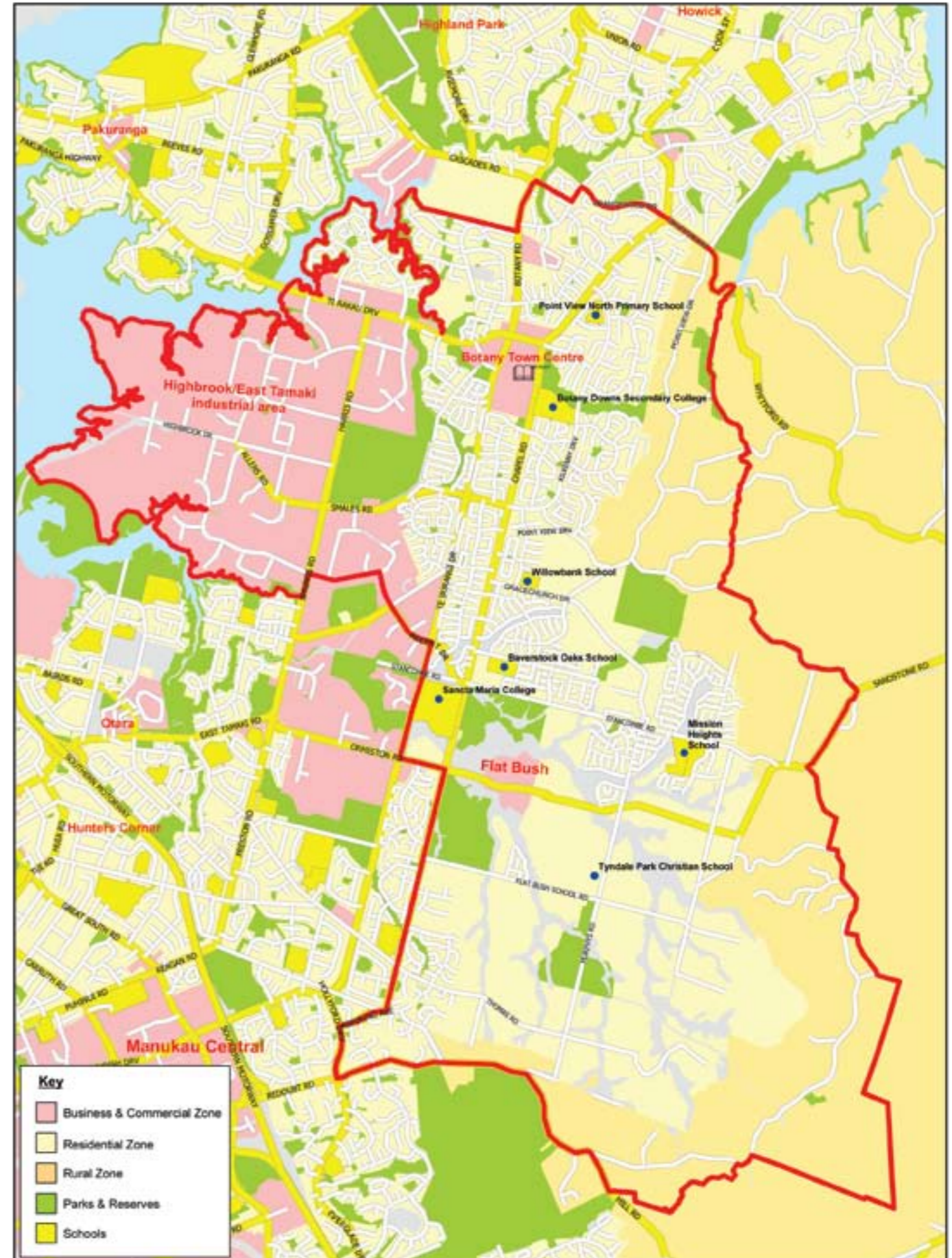
### Local participation

Given the Botany community's extremely diverse make-up, with both new and long-term residents, young families, new settlers, and various cultural communities, the community board is concerned to foster and encourage community participation in democratic processes, including consultations with the board, the Manukau City Council, the Auckland Regional Council and central Government.

Botany Community Board meetings are generally held on the first Monday of the month at the Botany Library, beginning at 6.30pm. All meetings are open to the public and everyone is welcome.

If you have any queries concerning the board, feel free to contact board members (see Appendix 4) or the Democratic Services Co-ordinator for Botany (Jenni Wild, phone 262 8900, extension 8189).





### Population Growth

## Botany-Clevedon ward Botany Community 2006 Census Profile

For more information on Council, Community Board Members, Wards and Communities, Demographics or Statistics contact Manukau City Council  
 contact@manukau.govt.nz  
 Phone: (09) 262 1104  
 www.manukau.govt.nz  
 Statistics source: Statistics New Zealand

## Botany-Clevedon ward Botany Community 2006 Census Profile

The Botany area was originally occupied by Nga iwi, Te Wai o Hua, and later Aki Tai and Ngati Kahu. More recently Ngai Tai occupy this area. European settlement began in the 1850s with the farming of mainly oats, hay and wheat, but it was not until the late 1970s that residential housing spread into the area.

Reflecting the Community boundary changes for the 2004 local authority elections, Botany now includes the rapidly developing Highbrook Business Park, Greenmount East Tamaki industrial area, the Burswood, Huntington Park, Gollands, Meadowlands Shamrock Park and Dannemora residential neighbourhoods, Point View Drive and the Redoubt Hills ridge through to Mill Road to east and south and the Chapel Haven area at the southern end of the Community, as well as the Botany Downs shopping centre and Hub, together with the current Mission Heights, Flat Bush and 94 ha Barry Curtis Park development, scheduled to accommodate a new town centre and 40,000 people.

Botany enjoys modern highway connections to both Manukau City (and through to Auckland International Airport) and to the Auckland CBD via both the South Eastern Arterial and the new Highbrook connection to the Southern Motorway. The multi million dollar Auckland Manukau Eastern Transport Initiative (AMETI) will upgrade the highway connection via Panmure, and may in future provide a light rail connection through from Manukau City centre.

People in Botany enjoy their high quality environment, with its exciting new growth and development and multicultural community. Botany's central location, close to all amenities, shopping, parks, good schools, including primary schools, Junior and Senior Colleges and High Schools, reserves, beaches and the countryside make it a great place for children to grow up in.



### Statistical Highlights

Up until 2004, Botany was part of the Howick Ward and as a community has experienced extreme growth with its population more than tripling over the past decade. The majority of Botany residents are European (48%) and Asian (42%), with the rest of the population consisting of 5% Maori, 4% Pacific Peoples and 3% Middle Eastern/Latin American/African ethnic groups – higher than that of any Ward in the city.

Two thirds of households are families with children and nearly a third of households earn more than \$100,000 making their median household income of \$79,300 the highest in Manukau City. Manufacturing and Wholesale/Retail Trade are the predominant industries with 32% of adults employed in them.

**General footnotes:** (1) This data has been randomly rounded to protect confidentiality. Individual figures may not add up to totals, and values for the same data may vary in different tables. (2) "Total Responses" includes all of the people/households who stated or reported more than one response and has been counted in each applicable group. Therefore the total number of responses in the table will be greater than the total number of people/households.

### Age Group

	Botany-Clevedon		Botany	
	Number	%	Number	%
0-4 Years	3,003	7	2,271	7
5-9 Years	3,318	8	2,291	7
10-14 Years	3,696	8	2,814	9
15-19 Years	3,038	7	2,418	7
20-24 Years	2,948	7	2,520	8
25-29 Years	2,826	6	2,136	7
30-34 Years	3,027	7	2,334	7
35-39 Years	3,788	9	2,888	9
40-44 Years	4,170	10	3,026	9
45-49 Years	3,489	8	2,529	8
50-54 Years	2,888	7	2,047	6
55-59 Years	2,486	6	1,755	5
60-64 Years	1,878	4	1,264	4
65 Years and Over	3,264	8	2,290	7
<b>Total</b>	<b>43,542</b>	<b>100</b>	<b>32,793</b>	<b>100</b>
Median Age	35			

### Religious Affiliation

	Botany-Clevedon		Botany	
	Number	%	Number	%
Total Responses	13,425	31	6,420	20
No Religion	1,908	4	1,857	6
Buddhist	20,109	46	14,778	43
Hindu	2,457	6	2,480	8
Islam/Muslim	1,952	2	1,329	3
Judaism/Jewish	69	0	57	0
Māori Christian	141	0	81	0
Spiritualities and New Age Religions	138	0	96	0
Other Religions	720	2	600	2
Not Elsewhere Included	4,294	10	2,790	9
<b>Total</b>	<b>43,542</b>	<b>100</b>	<b>32,820</b>	<b>101</b>

### Occupation

NZSIC Major Group	Botany-Clevedon		Botany	
	Number	%	Number	%
Legislators, Administrators and Managers	4,344	22	3,036	22
Professionals	3,380	17	2,691	17
Technicians and Associate Professionals	3,615	13	2,283	14
Clerks	2,952	13	2,228	14
Service and Sales Workers	2,694	12	2,106	13
Agriculture and Fishery Workers	495	2	129	1
Trades Workers	1,838	8	1,236	7
Plant and Machine Operators and Assemblers	983	4	729	4
Elementary Occupations (incl. Residuals)	1,382	6	1,341	8
<b>Total</b>	<b>22,401</b>	<b>100</b>	<b>16,828</b>	<b>99</b>

### Personal Income

	Botany-Clevedon		Botany	
	Number	%	Number	%
\$5,000 or Less	5,352	16	4,278	17
\$5,001 - \$10,000	2,187	7	1,798	7
\$10,001 - \$20,000	4,236	13	3,351	12
\$20,001 - \$30,000	3,630	11	2,897	11
\$30,001 - \$50,000	7,385	22	5,380	22
\$50,001 or More	6,132	24	5,791	23
Not Stated	2,613	8	1,770	7
<b>Total</b>	<b>33,525</b>	<b>100</b>	<b>25,347</b>	<b>98</b>
Median Personal Income	\$30,100			

### Gender

	Botany-Clevedon		Botany	
	Number	%	Number	%
Male	21,378	48	15,897	48
Female	22,961	51	16,932	51
<b>Total</b>	<b>43,539</b>	<b>100</b>	<b>32,841</b>	<b>100</b>

### Family Type

	Botany-Clevedon		Botany	
	Number	%	Number	%
Total Responses	4,314	35	3,069	33
Couple without children	4,314	35	3,069	33
Couple with children	6,025	33	5,064	54
One parent with children	1,903	12	1,224	13
<b>Total</b>	<b>12,425</b>	<b>100</b>	<b>9,417</b>	<b>99</b>

### Labour Force Status

	Botany-Clevedon		Botany	
	Number	%	Number	%
Employed Full-time	17,874	53	13,515	53
Employed Part-time	4,617	14	3,309	13
Unemployed	969	3	774	3
Not in the Labour Force	9,153	27	7,155	28
Work and Labour Force Status Undetermined	600	2	501	2
<b>Total</b>	<b>33,528</b>	<b>100</b>	<b>26,350</b>	<b>100</b>

### Household Income

	Botany-Clevedon		Botany	
	Number	%	Number	%
Total Responses				
\$20,000 or Less	1,095	8	759	7
\$20,001 - \$39,999	679	6	562	6
\$40,000 - \$59,999	1,578	11	1,116	11
\$60,000 - \$79,999	1,889	12	1,564	11
\$80,000 - \$139,999	2,265	16	1,581	16
\$140,000 or More	4,371	32	3,120	31
Not Stated	1,900	14	1,368	14
<b>Total</b>	<b>13,818</b>	<b>100</b>	<b>10,146</b>	<b>96</b>
Median Household Income	\$79,300			

### Employment Status

	Botany-Clevedon		Botany	
	Number	%	Number	%
Full Employee	16,560	74	12,652	76
Employer	2,085	9	1,323	8
Self-Employed and Without Employees	3,051	14	2,091	12
Unpaid Family Worker	306	2	228	1
Not Elsewhere Included	402	2	294	2
<b>Total</b>	<b>22,494</b>	<b>100</b>	<b>16,854</b>	<b>100</b>

### Tenure

ANZSIC 06 Divisions	Botany-Clevedon		Botany	
	Number	%	Number	%
Dwelling Owned or Partly Owned by Usual Resident(s)	7,434	54	5,466	54
Dwelling Not Owned by Usual Resident(s)	3,420	25	2,547	25
Dwelling Held in a Family Trust by Usual Resident(s)	2,337	17	1,587	16
Not Elsewhere Included	624	5	435	4
<b>Total</b>	<b>13,818</b>	<b>100</b>	<b>10,098</b>	<b>99</b>

### Telecommunications Access

	Botany-Clevedon		Botany	
	Number	%	Number	%
Total Responses				
No Access to Telecommunication Systems	81	1	63	1
Access to a Cellphone/Mobile Phone	11,536	81	9,154	81
Access to a Telephone	12,954	94	9,465	94
Access to a Fax Machine	5,676	41	4,095	40
Access to the Internet	10,578	77	7,633	77
Not Elsewhere Included	405	3	294	3
<b>Total</b>	<b>13,818</b>	<b>100</b>	<b>10,122</b>	<b>99</b>

### Ethnicity

	Botany-Clevedon		Botany	
	Number	%	Number	%
Total Responses				
European Ethnic Groups	23,127	55	14,508	48
Māori Ethnic Group	2,358	6	1,542	5
Pacific Peoples' Ethnic Groups	1,563	4	1,399	4
Asian Ethnic Groups	13,596	32	13,374	42
Middle Eastern, Latin American and African Ethnic Groups	858	2	967	3
Other Ethnic Groups	3,681	9	2,349	7
<b>Total</b>	<b>42,138</b>	<b>107</b>	<b>31,989</b>	<b>106</b>

### Highest Qualification Gained

ANZSIC 06 Divisions	Botany-Clevedon		Botany	
	Number	%	Number	%
No Qualification	4,574	15	3,540	14
Level 1 Certificate Gained at School	3,429	10	2,352	9
Level 2 Certificate Gained at School	2,655	6	1,884	7
Level 3 or 4 Certificate Gained at School	1,526	6	1,005	6
Overseas Secondary School Qualification	4,272	13	3,810	15
Level 1, 2 or 3 Certificate Gained Post-school	1,227	4	969	4
Level 4 Certificate Gained Post-school	3,066	9	2,064	8
Level 5 Diploma	1,521	5	1,104	4
Level 6 Diploma	1,788	5	1,245	5
Bachelor Degree and Level 7 Qualifications	4,761	14	3,852	15
Postgraduate and Honours Degrees	576	2	432	2
Masters Degree	762	2	612	2
Doctorate Degree	150	0	99	0
Not Elsewhere Included	2,385	7	1,593	6
<b>Total</b>	<b>33,528</b>	<b>100</b>	<b>26,320</b>	<b>99</b>

### Sources Of Personal Income

Total Responses	Botany-Clevedon		Botany	
	Number	%	Number	%
Wages, Salary, Commissions, Bonuses, etc	19,356	58	14,808	58
Self-employment or Business	6,171	18	4,056	16
Interest, Dividends, Rent, Other Invest	8,864	24	5,733	23
Payments from a Work Accident Insurer	273	1	153	1
NZ Superannuation or Veterans Pension	2,475	7	1,626	6
Other Super., Pensions, Annuities	581	2	360	2
Unemployment Benefit	573	2	468	2
Sickness Benefit	441	1	372	1
Domestic Purposes Benefit	402	1	261	1
Invalids Benefit	282	1	207	1
Student Allowance	768	2	702	3
Other Govt Benefits, Payments or Pension	798	2	618	2
Other Sources of Income	654	2	582	2
No Source of Income During That Time	2,821	9	2,439	10
Total People Stated	31,926	95	24,081	95
Not Stated	1,602	5	1,082	4
<b>Total</b>	<b>33,525</b>	<b>100</b>	<b>26,320</b>	<b>99</b>

### Industry

ANZSIC 06 Divisions	Botany-Clevedon		Botany	
	Number	%	Number	%
Agriculture, Forestry and Fishing	375	2	69	0
Mining	15	0	6	0
Manufacturing	2,949	13	2,067	12
Electricity, Gas, Water and Waste Services	135	1	102	1
Construction	1,885	7	939	6
Wholesale Trade	2,540	9	1,473	9
Retail Trade	2,480	11	1,923	11
Accommodation and Food Services	1,074	5	876	5
Transport, Postal and Warehousing	1,176	5	858	5
Information Media and Telecommunications	444	2	333	2
Financial and Insurance Services	1,011	4	837	5
Rental, Hiring and Real Estate Services	855	4	531	3
Professional, Scientific and Technical Services	1,980	9	1,428	8
Administrative and Support Services	795	3	528	3
Public Administration and Safety	501	2	321	2
Education and Training	1,575	7	1,116	7
Health Care and Social Assistance	1,347	6	957	6
Arts and Recreation Services	267	1	174	1
Other Services	945	4	687	4
Not Elsewhere Included	939	4	633	4
<b>Total</b>	<b>22,494</b>	<b>100</b>	<b>16,896</b>	<b>100</b>

## APPENDIX 3

# Role of community boards

Section 52 of the Local Government Act 2002 provides as follows:

The role of a community board is to:

- (a) represent, and act as an advocate for, the interests of its community; and
- (b) consider and report on all matters referred to it by the territorial authority, or any matter of interest of concern to the community board; and
- (c) maintain an overview of services provided by the territorial authority within the community; and
- (d) prepare an annual submission to the territorial authority for expenditure within the community; and
- (e) communicate with community organisations and special interest groups within the community; and
- (f) undertake any other responsibilities that are delegated to it by the territorial authority.

### NOTES:

*In relation to the Botany Community Board, the "territorial authority" refers to the Manukau City Council.*

*The "annual submission" referred to in (d) above refers to a submission in respect of the Manukau City Council's Annual Plan or Long Term Council Community Plan.*

## APPENDIX 4

# Botany Community Board members



Dyann Calverley  
Chairperson

2 Lexington Drive  
Botany Downs  
MANUKAU 2010

Home Phone: 537 6400  
Mobile: 021 535 682  
Email: dyanncalverley@hotmail.com



Wayne Huang  
Deputy Chairperson

1 Estelle Place  
Farm Cove  
MANUKAU 2012

Mobile: 021 280 6238  
Email: wayne@seenet.co.nz



Trevor Armstrong

7 Millington Place  
Huntington Park  
MANUKAU 2013

Mobile: 021 185 4074  
Email: t\_armstrong2@hotmail.com



Roy Bootle

3 Ksenia Drive  
Flat Bush  
MANUKAU 2016

Home Phone: 277 4754  
Email: roy.meena.bootle@xtra.co.nz



Lucy Schwaner

PO Box 38232  
Howick  
MANUKAU

Home Phone: 271 3255  
Mobile: 027 362 8817  
Email: lschwaner@xtra.co.nz



Cr Maggie Burrill

Northridge Estate  
125 Murphys Road  
MANUKAU 2016

Mobile: 021 858 228  
Email: maggiewb@clear.net.nz



Cr Michael Williams

22 Masfield Street  
MANUKAU 2014

Mobile: 021 702 802  
Email: botany@michaelwilliams.co.nz

## APPENDIX 5 Board member responsibilities and representation on outside organisations

Aircraft Noise Community Consultative Group	Roy Bootle
Auckland Manukau Eastern Transport Initiative (AMETI) Political Steering Group	Dyann Calverley
Auckland Region and Far North Community Boards Incorporated	Dyann Calverley
Botany Community Board Resource Consents Hearings Committee	Cr Maggie Burrill Cr Williams (Alternate) Dyann Calverley Wayne Huang (Alternate)
Botany Neighbourhood Support	Trevor Armstrong
Botany/Flat Bush Residents Association Inc	Roy Bootle
Botany town centre	Dyann Calverley
Combined Neighbourhood Support Group	Roy Bootle
Community Safety Network	Trevor Armstrong Roy Bootle
Creative Communities NZ Manukau City Assessment Committee	Trevor Armstrong Dyann Calverley (alternate)
Transport matters (through the Democratic Services Co-ordinator)	Dyann Calverley
Parks and reserves matters (through the Democratic Services Co-ordinator)	Trevor Armstrong/ Roy Bootle
Counties Manukau (East) Police Community Partnership Group	Roy Bootle
Flat Bush Community Association Inc	Cr Maggie Burrill
Huntington Park Residents and Ratepayers Association	Trevor Armstrong
Liquor Licensing Liaison with District Licensing Agency	Lucy Schwaner
Otara Lake Community Liaison Group	Cr Maggie Burrill
Resource consents liaison with team leader resource consents – Botany	Dyann Calverley
Manukau Asian Forum	Wayne Huang
Tree Applications Consent Liaison	Cr Maggie Burrill
Greenmount Landfill Public Group	Trevor Armstrong

## APPENDIX 6 Tomorrow's Botany (excerpt from Tomorrow's Manukau)

During the review of Tomorrow's Manukau – Manukau Āpōpō (A Vision for Manukau into the Future 2006-2016) throughout 2004 and 2005, the Botany community identified the following areas as needing particular attention (grouped under the seven general "community outcomes" themes listed in that document):

### Educated and Knowledgeable People

- Ensure provision of pre-school activities in the area.
- Maintain high standard of educational facilities.

### Vibrant and Strong Communities

- Ensure sufficient parks, reserves, community facilities and public spaces meet community demand.
- Establish a Botany identity.

### Safe Communities

- Police to focus on community priorities, e.g. burglary, graffiti, speeding.
- Increase police presence and visibility in Botany.
- Ensure streets allow for better parking, service and emergency vehicle access.
- Enforce speed limits.

### Moving Manukau

- Reduce congestion through development and completion of an efficient roading network, linking Botany to employment centres in the Auckland region.
- Promote and provide local public transport, such as smaller buses and 'Link' services.

### Healthy People

- Improve access to health facilities, including hospitals.

### Thriving Economy

- Ensure transport infrastructure can cope with business demands.
- Create local work opportunities.

### Sustainable Environment and Heritage

- Locate national grid transmission lines underground.
- Maintain heritage assets within Botany, e.g. the historic farmhouse.

## APPENDIX 7

# Flat Bush community plan

The objectives and priorities of the Flat Bush community plan are summarised below, again under the broad community outcomes themes as identified in Tomorrow's Manukau – Manukau Āpōpō.

Although, in general, priorities do not appear in more than one section, the plan recognises that all the objectives are interrelated and impact on each other. For example, transport impacts on economic prosperity, community safety, health, and the ability of people to access community facilities and services and connect with each other.

The priorities in italics are already included in Tomorrow's Manukau – Manukau Āpōpō/Tomorrow's Botany.

### Educated and Knowledgeable People

Education, training and knowledge are critical in determining social, economic, cultural and environmental wellbeing.

Skill levels and qualifications have a major impact on people's ability to find work and on their personal income levels. These things impact on the quality of their housing and environment, and may correlate with their level of health and ability to participate in the community, and on crime rates.

- *Encourage innovative, high quality schools that are responsive to community aspirations and needs, and welcome all students, regardless of abilities.*
- *Encourage community, public and private organisations to provide high quality early childhood care and education.*
- Facilitate community, public and private organisations to provide high quality after school care and holiday programmes.
- Where possible, encourage the alignment of school zones with recognised community boundaries.
- Support the provision of a gifted children programme in Flat Bush to serve both Flat Bush and Botany.
- Encourage provision of a secondary/tertiary student learning centre within the Flat Bush Library.
- Facilitate programmes for safe journeys between home and school.
- Establish transport links that give easy access to tertiary institutions.
- Encourage the establishment of antenatal and parenting courses and support for families.
- Encourage the provision of adult education opportunities.
- Encourage the provision of ESOL programmes to support new settlers in Flat Bush.
- Encourage innovative partnerships in the use of information technology and knowledge resources such as libraries, and the development of Flat Bush Town Centre as a culture and information hub.

### Healthy People

The health and wellbeing of people and communities is dependent on environmental, physical, social, cultural and spiritual factors.

People need adequate incomes, good quality and affordable housing, strong families as well as access to goods and services.

- Establish neighbourhood parks and open spaces that are connected to neighbourhoods, and can be used safely by children and easy to supervise, and are located so that people do not have to cross main arterial roads to access them.
- Establish a framework for healthy neighbourhood design and encourage people to walk, cycle, use parks, open spaces and community facilities for active leisure.
- Establish transport links to give easy access to Barry Curtis Park and other green spaces for workers in Greenmount and East Tamaki.
- Advocate to community-based and Government social service agencies to meet the needs of Flat Bush residents.
- Encourage the provision of accessible primary health care services including general practitioner services, dental services, laboratory, pharmacies and other ancillary support services.
- Encourage provision of health services that meet the needs of the diverse cultures in Flat Bush.
- Engage neighbourhoods in establishing and maintaining high standards of public and environmental health.
- Ensure that a high standard of housing is maintained within the community and that 'healthy housing' principles are followed.
- Ensure that residents are able to access secondary and tertiary health and medical services through flexible transport options including public transport and/or the taxi subsidy.

## Moving Manukau

Quality of life for many people depends significantly on how easy it is to move between home, work, educational institutions, shops and recreation areas. For businesses, the ability to move products quickly to distribution points is critically important to competitiveness.

Congestion must be reduced and an attractive and efficient public transport system developed, with more opportunities for walking and cycling.

- *Minimise road-based congestion and improve traffic flow to, from and within Flat Bush, through effective and integrated roading and transport systems.*
- Establish an effective road hierarchy that locates heavy traffic on key roads and separates different types of traffic, to reduce congestion and improve traffic flow including preserving easy access to Greenmount/East Tamaki.
- Introduce traffic flow measures such as light phasing and high occupancy vehicle lanes
- Provide a choice of public and private transport alternatives.
- Establish an integrated cycling and public transport system within Flat Bush connected to Manukau suburbs and to Auckland City.
- Provide clean, safe, convenient and integrated public transport that is accessible to everyone.
- Inform people of available transport subsidies.
- Encourage community-based transport options.
- Encourage neighbourhoods to establish walking buses.
- *Ensure safe and secure car parking in neighbourhoods, shopping centres and public transport facilities.*
- Ensure adequate provision of off-street parking, especially in the town centre.
- *Establish and maintain safe well-designed streets that provide a balance between vehicle movement and pedestrian access and safety.*
- Ensure that development that incorporate commercial or other non-residential uses, provide adequate space for storage, loading and unloading activities as well as parking.

## Safe Communities

Manukau's future as a great place to live, work and play, with an attractive quality of life depends on preventing crime and reducing fear of crime so people feel safe and secure. When people feel free from danger or risks, both real and perceived, they are more likely to be involved in their communities.

- *Establish an on-going and adequate Police presence within Flat Bush Town centre and surrounding neighbourhoods that is connected to the community and focused on community priorities.*
- Encourage the establishment of and continuing support for neighbourhood support groups for residents and businesses.
- Ensure adequate provision of public telephones.
- Encourage crime prevention through environmental design (CPTED) within the town centre and neighbourhoods.
- Manage and monitor the use of alcohol in public areas to promote safety.
- Make provision for CCTV in Flat Bush town centre if it becomes necessary.
- *Ensure that the design and width of streets facilitates safe and easy access for emergency services.*
- Encourage community and other organisations to participate in emergency management planning and initiatives.
- Manage and maintain parks, open spaces and storm water areas to promote safety.
- Ensure planting schemes minimise obstacles, like overhanging plants, which are a hazard especially to blind and visually impaired people.
- Promote pedestrian and cyclist access and safety on roads, walkways, around neighbourhood parks and other recreational facilities, and in shopping centres.
- Actively monitor accident spots, with priority to schools, and introduce speed restrictions where necessary.
- Ensure there is adequate traffic signage around schools.
- Incorporate safe access to buses, trains and taxis, including lighting, into planning for shopping centres, community facilities and housing, including apartments.
- Ensure the provision of lighting in streets, shopping centres, open spaces and other public areas that maximises people's sense of safety and security.

### Sustainable Environment and Heritage

Clean air and water and access to green spaces, and an attractive and clean environment, are crucial to our sense of health and well-being. One of Manukau's strengths is our cultural diversity. To ensure sustainability we need to celebrate, embrace and protect that cultural diversity, preserving the environment, history and heritage.

- Work in partnership with Mana Whenua kaitiaki through active consultation to ensure environmental well-being and protection of cultural heritage (including wahi tapu).
- Encourage community involvement in setting the scale, style and functionality of the Flat Bush town centre.
- Create an arts and cultural precinct in the town centre.
- Create and support opportunities for arts activities in Barry Curtis Park.
- Ensure the naming of streets, parks, reserves and features such as plaques and signs reflect the ancestral and historic heritage of the Flat Bush area.
- Facilitate community initiatives directed at identifying and protecting heritage buildings and sites.
- Ensure landscape development and planting schemes that preserve existing plants' and trees' heritage and include planting native and heritage species.
- Ensure the ongoing care and maintenance of green and open spaces are to a high standard.
- Protect the recreational amenity of the natural environment e.g. eeling in waterways.
- Ensure clean and tidy environments in the town centre and green spaces.
- Minimise pollution to local waterways from excavations and earthworks through:
  - monitoring and ensuring compliance with district and regional environmental standards and planning requirements
  - engaging neighbourhoods in waterway protection and planting activities
  - developing a mosquito control plan for the waterways.
- *Advocate for underground national grid transmission lines.*

### Thriving Economy

To build and sustain high quality lifestyles for current and future generations, it is important to develop the kind of economic growth that will generate jobs and wealth for the region, whilst safeguarding the natural environment. This means fostering the growth of high value businesses that are environmentally friendly and the skills and knowledge of the community.

- Establish effective and integrated roading and transport systems within Flat Bush, between Flat Bush and the rest of Manukau, and with the wider Auckland region.
- Ensure the involvement of commercial, residential and community tenants in management of the town centre through establishment of a participative town centre governance structure.
- Ensure housing, amenities, facilities and streetscapes, provide quality living and business environments and protect the value of residents' housing investment.
- Ensure that the design of buildings, width of streets and provision of parking is adequate for mixed use areas and home-based businesses.
- Encourage opportunities for private sector and community provision of community facilities.
- Encourage integrated and forward planning for the infrastructure and service needs of business including:
  - drainage and sewerage
  - effective transport network
  - information technology
  - power and phone.
- Encourage openness to commercial/entrepreneurial opportunities in Barry Curtis Park and the town centre.
- Recognise the contribution of disabled people to the economy in Flat Bush.
- Ensure fair and equitable distribution of rates.

## Vibrant and Strong Communities

Strong community, cultural and family ties underpin community cohesion and these contribute to people having a sense of health and wellbeing. The image and character of the City has a significant impact on this. The City's design must cater for diverse lifestyles and cultures.

- Support the community to make its own decisions and encourage public sector agencies to engage constructively with the community in decision-making.
- Manukau City Council facilitates constructive engagement between the Flat Bush community and agencies proposing to locate amenities and services in Flat Bush, and facilitates co-ordination between agencies.
- Encourage the community to participate in the Manukau City Council consultation processes about the development and management of community facilities and amenities, such as the town centre, library, aquatic centre, neighbourhood parks, multi-sports centre and other recreation facilities, community activity centres, community arts and cultural facilities.
- Encourage community participation in democratic processes, including Manukau City Council, Botany Community Board, Auckland Regional Council and central Government consultations.
- Encourage residents to develop a Flat Bush identity by:
  - installing welcome signage
  - providing information services and information about Flat Bush in a range of languages and accessible formats for disabled people.
  - encouraging and supporting the development of community groups and networks
  - giving priority to the development and support of community based services such as Plunket, citizen's advice bureau, new settler's programmes, domestic violence support (e.g. emergency housing), youth programmes and events
  - ensuring access to a Council service centre in Eastern Manukau
  - encouraging social marketing opportunities and vehicles for community news
  - *establishing affordable spaces for community organisations to administer and deliver community-based activities and services in the Flat Bush town centre; including spaces for large gatherings.*

- Encourage and facilitate the provision of land, and the development of churches and other organisations, that provide for spiritual needs.
- Design a built environment that allows residents to connect with one another and encourage neighbourhood activity.
- Provide safe places, activities and events for children and young people that encourage their connection to Flat Bush, both in the town centre and in neighbourhoods.
- Recognise the responsibility of Central Government to provide social housing that is dispersed and integrated with other housing.
- Ensure adequate resources are available for working with the Flat Bush community to establish the networks and services they identify as required.
- Identify and facilitate key community and government agencies to establish the range of services and information needed by new settlers.
- *Provide facilities and open spaces for arts and cultural activities and events.*
- Encourage different cultural groups to celebrate and share their cultural festivals with others.
- Provide opportunities for the community to experience tikanga Maori and learn about the Maori and European history of Flat Bush.

## APPENDIX 7

# Flat Bush community plan continued...

### Meeting Particular Needs

Tomorrow's Manukau - Manukau Āpōpō reflects the unique diversity of Manukau's communities.

As the City grows, the inclusion and participation of all peoples, regardless of age, culture and ability, in their communities needs to be nurtured to promote mutual trust, respect and understanding. In particular, Tomorrow's Manukau - Manukau Āpōpō recognises that the wellbeing of children and young people is paramount, and the improved health and safety of people, families and communities is essential to the City's wellbeing.

#### Children, young people and families

- *Encourage community, public and private organisations to provide high quality early childhood care and education.*
- *Encourage innovative, high quality primary and secondary education that is responsive to community needs and inclusive of students of all abilities.*
- Facilitate community, public and private organisations to provide high quality after school care and holiday programmes.
- Encourage the establishment of antenatal and parenting courses and support for families.
- Support the provision of a gifted children programme in Flat Bush to serve both Flat Bush and Botany.
- Encourage the provision of adult education opportunities.
- Ensure that people who are unable to use cars (including young people, older people and disabled people) can achieve the mobility they need by:
  - informing people of available transport subsidies
  - encouraging community based transport options
  - encouraging neighbourhoods to establish walking buses.
- *Facilitate programmes for safe journeys between home and school, e.g. walking buses.*
- Encourage the development of community-based services that support young people and strengthen family relationships e.g., Relationship Services, Plunket, CAB, new settlers' programmes, domestic violence support (e.g. emergency housing).
- Encourage the development of neighbourhood and street-based support, e.g. coffee groups, street parties, book clubs.
- Provide safe places, activities and events for children and young people that encourage their connection to Flat Bush both in the town centre and in neighbourhoods.

- Promote a "family-friendly" environment in the town centre with a variety of affordable activities for children, young people and their families.
- *Establish parks and open spaces that are connected to neighbourhoods, which can be used safely by children, facilitate supervision, and are located so that people do not have to cross main arterial roads to access them.*

#### Older people

- Design a built environment that allows residents to connect with one another and encourages neighbourhood activity.
- Establish parks and open spaces that are connected to neighbourhoods, which can be used safely by older people, and are located so that older people do not have to cross main arterial roads to access them.
- Encourage the provision of accessible primary health care services that meet the needs of the diverse cultures in Flat Bush, and good transport links to hospitals and specialist health services.
- Provide programmes that target maintaining mobility and mental wellbeing.
- Ensure that community facilities are open to providing programmes for older people.
- Provide ESOL classes, education and social activities for older new settlers.

#### Disabled people

- Provide information services in Flat Bush and information about Flat Bush in a range of languages and accessible formats for disabled people.
- Use universal design principles and best practice on access for disabled people, especially in the town centre and major leisure, cultural and community facilities.
- Ensure the inclusion of barrier-free auditors on design teams.
- Ensure public facilities are located on a ground floor or otherwise accessible without the use of a lift.
- Ensure that disabled people, can achieve the mobility they need by:
  - providing clean, safe, convenient public transport that is accessible to people with all types of disabilities
  - informing people of available transport subsidies
  - encouraging community-based transport options.
- Ensure strict enforcement of mobility parking laws.

#### New settlers

- Provide information for current and prospective residents in a range of languages and local media.
- Identify and facilitate key community and Government agencies to establish the range of services and information needed by new settlers and build the capacity to respond to different cultural needs within mainstream services.
- Encourage the provision of ESOL programmes to support new settlers in Flat Bush.
- Encourage community activities that provide opportunities for new settlers and existing communities to socialise and celebrate together.
- *Encourage different cultural groups to celebrate/share their cultural festivals with others.*
- Provide new settlers with opportunities to experience tikanga Maori and learn about the Maori and European history of Flat Bush.